

**RUDRAKSH
CLUB & RESORT
AT UJJAIN**

ARCHITECT

INTERIOR ARCHITECT

F & B Planner & Designer

MEP CONSULTANT

KITCHEN CONSULTANT



3S KITCHEN DESIGN
F & B Planner & Designer
403, 4th FLOOR, TIRUMALA KRISHNA, SARICARTERAO,
MIDWALAH - 400016, MH - 411 22 MIDWALAH,
CELL : 91 9872782877
WWW.3SKITCHENDESIGN.COM

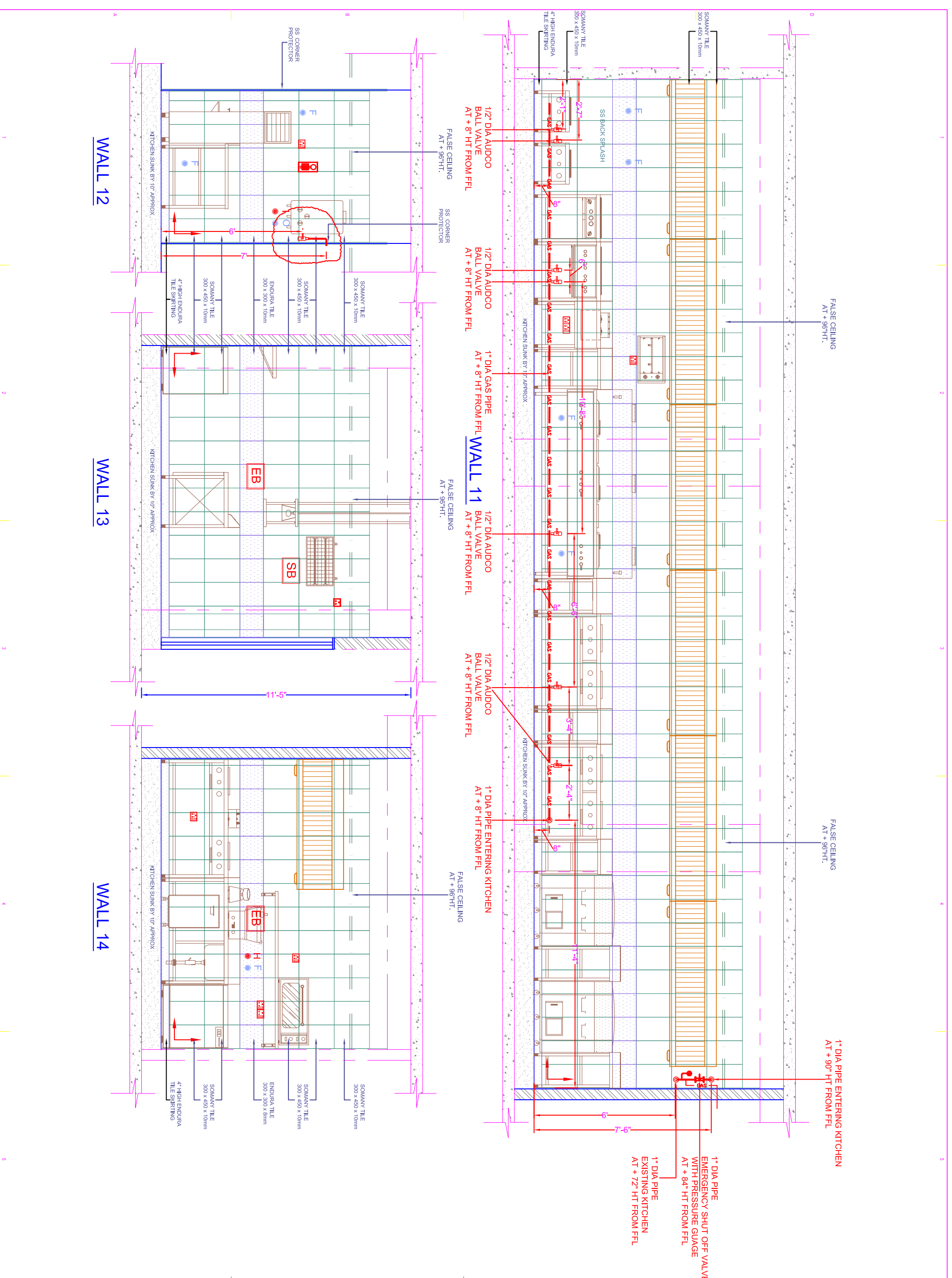
000002000	TENDER DOCUMENT SUBMISSION	
DATE	SUBMITTAL /REVISION	REV.
GENERAL NOTE:		

PROJECT NO :-
3S - RCRU - 28 - 00.

SHEET TITLE
**PROPOSED ALA-CARTE KITCHEN
WALL ELEVATION.**

BLOG #	SHEET NUMBER	REV. #
3S - RCRU - GFAK - 13 /C.		00.
DATE	SCALE	DRAWN
27 / 08 / 2016	N/S	SHWETA
	CHECKED	SANEEL

© 3S KITCHEN DESIGN. All Rights Reserved
NO PART OF THE CONTENTS OF THIS DOCUMENT MAY BE REPRODUCED OR TRANSMITTED IN ANY FORM OR BY ANY MEANS WITHOUT THE WRITTEN PERMISSION OF 3S KITCHEN DESIGN.



WALL 12

WALL 13

WALL 14

1/2" DIA AUDCO
BALL VALVE
AT + 8" HT FROM FFL

1/2" DIA AUDCO
BALL VALVE
AT + 8" HT FROM FFL

1" DIA GAS PIPE
AT + 8" HT FROM FFL

1/2" DIA AUDCO
BALL VALVE
AT + 8" HT FROM FFL

1/2" DIA AUDCO
BALL VALVE
AT + 8" HT FROM FFL

1" DIA PIPE ENTERING KITCHEN
AT + 8" HT FROM FFL

FALSE CEILING
AT + 96"HT.

SS CORNER
PROTECTOR

SS CORNER
PROTECTOR

FALSE CEILING
AT + 96"HT.

FALSE CEILING
AT + 96"HT.

FALSE CEILING
AT + 96"HT.

FALSE CEILING
AT + 96"HT.

1" DIA PIPE ENTERING KITCHEN
AT + 90" HT FROM FFL

1" DIA PIPE
EMERGENCY SHUT OFF VALVE
WITH PRESSURE GAUGE
AT + 84" HT FROM FFL

1" DIA PIPE
EXISTING KITCHEN
AT + 72" HT FROM FFL

KITCHEN SINK BY 10" APPROX

KITCHEN SINK BY 10" APPROX

KITCHEN SINK BY 10" APPROX

KITCHEN SINK BY 10" APPROX

SS CORNER
PROTECTOR

SS CORNER
PROTECTOR

SS CORNER
PROTECTOR

SS CORNER
PROTECTOR

SOMANY TILE
300 x 450 x 10mm

SOMANY TILE
300 x 450 x 10mm

SOMANY TILE
300 x 450 x 10mm

SOMANY TILE
300 x 450 x 10mm

ENDURA TILE
300 x 300 x 10mm

ENDURA TILE
300 x 300 x 10mm

ENDURA TILE
300 x 300 x 10mm

ENDURA TILE
300 x 300 x 10mm

4" HIGH ENDURA
TILE SKirting

4" HIGH ENDURA
TILE SKirting

4" HIGH ENDURA
TILE SKirting

4" HIGH ENDURA
TILE SKirting

SS BACK SPLASH

SS BACK SPLASH

SS BACK SPLASH

SS BACK SPLASH

300 x 450 x 10mm

300 x 450 x 10mm

300 x 450 x 10mm

300 x 450 x 10mm

300 x 450 x 10mm

300 x 450 x 10mm

300 x 450 x 10mm

300 x 450 x 10mm

300 x 450 x 10mm

300 x 450 x 10mm

300 x 450 x 10mm

300 x 450 x 10mm

300 x 450 x 10mm

300 x 450 x 10mm

300 x 450 x 10mm

300 x 450 x 10mm

300 x 450 x 10mm

300 x 450 x 10mm

300 x 450 x 10mm

300 x 450 x 10mm

300 x 450 x 10mm

300 x 450 x 10mm

300 x 450 x 10mm

300 x 450 x 10mm

300 x 450 x 10mm

300 x 450 x 10mm

300 x 450 x 10mm

300 x 450 x 10mm

300 x 450 x 10mm

300 x 450 x 10mm

300 x 450 x 10mm

300 x 450 x 10mm

300 x 450 x 10mm

300 x 450 x 10mm

300 x 450 x 10mm

300 x 450 x 10mm

300 x 450 x 10mm

300 x 450 x 10mm

300 x 450 x 10mm

300 x 450 x 10mm

300 x 450 x 10mm

300 x 450 x 10mm

300 x 450 x 10mm

300 x 450 x 10mm

300 x 450 x 10mm

300 x 450 x 10mm

300 x 450 x 10mm

300 x 450 x 10mm

300 x 450 x 10mm

300 x 450 x 10mm

300 x 450 x 10mm

300 x 450 x 10mm

300 x 450 x 10mm

300 x 450 x 10mm

300 x 450 x 10mm

300 x 450 x 10mm

300 x 450 x 10mm

300 x 450 x 10mm

300 x 450 x 10mm

300 x 450 x 10mm

300 x 450 x 10mm

300 x 450 x 10mm

300 x 450 x 10mm

300 x 450 x 10mm

300 x 450 x 10mm

300 x 450 x 10mm

300 x 450 x 10mm

300 x 450 x 10mm

300 x 450 x 10mm

300 x 450 x 10mm

300 x 450 x 10mm

300 x 450 x 10mm

300 x 450 x 10mm

300 x 450 x 10mm

300 x 450 x 10mm

300 x 450 x 10mm

300 x 450 x 10mm

300 x 450 x 10mm

300 x 450 x 10mm

300 x 450 x 10mm

300 x 450 x 10mm

300 x 450 x 10mm

300 x 450 x 10mm

300 x 450 x 10mm

300 x 450 x 10mm

300 x 450 x 10mm

300 x 450 x 10mm

300 x 450 x 10mm

300 x 450 x 10mm

300 x 450 x 10mm

300 x 450 x 10mm

300 x 450 x 10mm

300 x 450 x 10mm

300 x 450 x 10mm

300 x 450 x 10mm

300 x 450 x 10mm

300 x 450 x 10mm

300 x 450 x 10mm

300 x 450 x 10mm

300 x 450 x 10mm

300 x 450 x 10mm

300 x 450 x 10mm

300 x 450 x 10mm

300 x 450 x 10mm

300 x 450 x 10mm

300 x 450 x 10mm

300 x 450 x 10mm

300 x 450 x 10mm

300 x 450 x 10mm

300 x 450 x 10mm

300 x 450 x 10mm

300 x 450 x 10mm

300 x 450 x 10mm

300 x 450 x 10mm

300 x 450 x 10mm

300 x 450 x 10mm

300 x 450 x 10mm

300 x 450 x 10mm

300 x 450 x 10mm

300 x 450 x 10mm

300 x 450 x 10mm

300 x 450 x 10mm

300 x 450 x 10mm

300 x 450 x 10mm

300 x 450 x 10mm

300 x 450 x 10mm

300 x 450 x 10mm

300 x 450 x 10mm

300 x 450 x 10mm

300 x 450 x 10mm

300 x 450 x 10mm

300 x 450 x 10mm

300 x 450 x 10mm

300 x 450 x 10mm

300 x 450 x 10mm

300 x 450 x 10mm

300 x 450 x 10mm

300 x 450 x 10mm

300 x 450 x 10mm

300 x 450 x 10mm

300 x 450 x 10mm

300 x 450 x 10mm

300 x 450 x 10mm

300 x 450 x 10mm

300 x 450 x 10mm

300 x 450 x 10mm

300 x 450 x 10mm

300 x 450 x 10mm

300 x 450 x 10mm

300 x 450 x 10mm

300 x 450 x 10mm

300 x 450 x 10mm

300 x 450 x 10mm

300 x 450 x 10mm

300 x 450 x 10mm

300 x 450 x 10mm

300 x 450 x 10mm

300 x 450 x 10mm

300 x 450 x 10mm

300 x 450 x 10mm

300 x 450 x 10mm

300 x 450 x 10mm

300 x 450 x 10mm

300 x 450 x 10mm

300 x 450 x 10mm

300 x 450 x 10mm

300 x 450 x 10mm

300 x 450 x 10mm

300 x 450 x 10mm

300 x 450 x 10mm

300 x 450 x 10mm

300 x 450 x 10mm

300 x 450 x 10mm

300 x 450 x 10mm

300 x 450 x 10mm

300 x 450 x 10mm

300 x 450 x 10mm

300 x 450 x 10mm

300 x 450 x 10mm

300 x 450 x 10mm